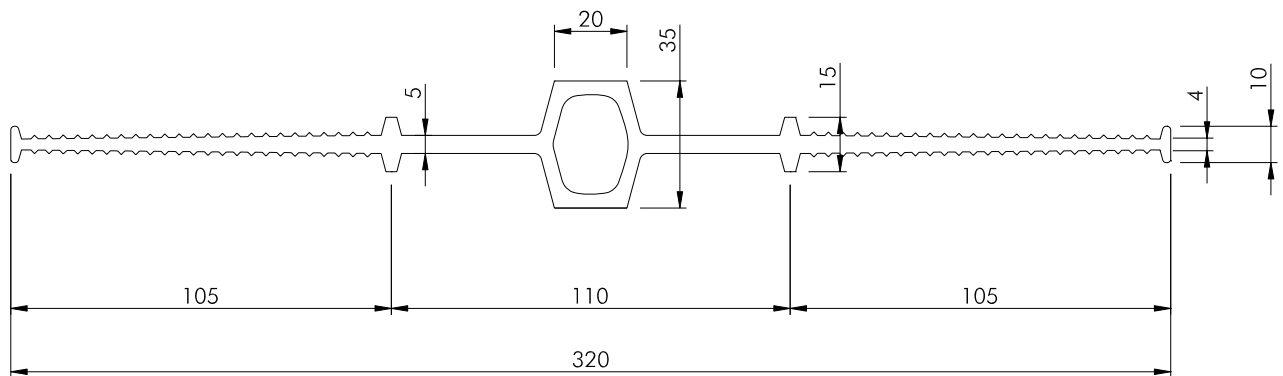


**DATA SHEET**

**BESAFLEX<sup>®</sup> D 320 according to company standard**



Material/ material	Besaflex <sup>®</sup> (W-PVC) Besaflex <sup>®</sup> (S-PVC)	Prüfmethode/ test method
Shore-Härte A/ shore hardness A	75 ± 5	ISO 868
Bruchdehnung/ elongation at break	≥ 275 %	ISO 527-2
Zugfestigkeit/ tensile strength	≥ 8 N/mm <sup>2</sup>	ISO 527-2
Brandverhalten/ fire resistance	B2	DIN 4102-1
Maßtoleranzen/ dimensional tolerances	Toleranzreihe 3B/ tolerance line 3B	DIN 16941